



FACILITY HUB

**Integrated Facility
Management**





FACILITY HUB

Integrated Facility Services

**HELLO
WORLD !**



"Bridging the United Kingdom and Egypt, One business solution at a time."



ABOUT US

FACILITY HUB was established in 2023 and we are looking forward to being one of the leading in the fields of Asset and Facilities Management.

FACILITY HUB started in the UK and is targeted to be the most trusted business support and outsourcing provider in Europe as we have a large, dynamic, and cultural background to achieve our target.





Our Vision

To change the meaning of business support services and the outsourcing environment in the region.



Our Mission

To be our customers' trusted partner delivering total business support solutions, to enable our customers to focus on their core business.

VISION
MISSION
CULTURE



Our Culture

We believe the best way to achieve success is to invest in a skilled workforce; provide the resources they need to do their jobs well; and support their efforts daily.

OUR **VALUES**

Team: Together we achieve more. Always work as one team.

Relate: Relationships matter. Be open, honest and connect.

Unique: Diversity enriches business. Think independently together.

Safe: Well-being inspires productivity. Create a safe environment.

Talent: Empower our people. Drive excellence and celebrate success.



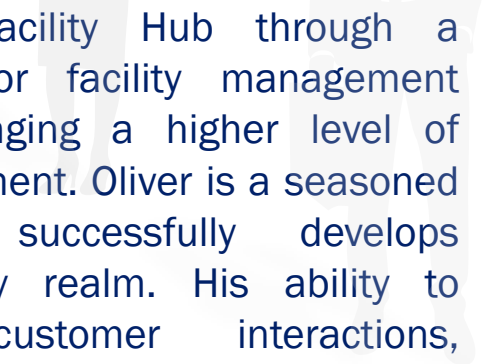


OUR LEADERSHIP

THE OFFICE OF THE
EXECUTIVE BOARD

OLIVER BRANDON

PRESIDENT/CO-FOUNDER



Oliver Brandon co-founded Facility Hub through a motivation to build a superior facility management company that focuses on bringing a higher level of accountability in facility management. Oliver is a seasoned industry professional who successfully develops relationships within the facility realm. His ability to comprehensively manage customer interactions, communicate with expertise, and develop and implement innovative strategies ensures successful outcomes for our customers and the team. He is often involved at the planning level of projects and maintains a consistent presence to uphold a cohesive consistency.



AHMED MOHAMED

CHIEF EXECUTIVE OFFICER/CO-FOUNDER

Ahmed Mohamed has been the Co-Founder and Chief Executive Officer (CEO) of Facility Hub, He is an expert in planning strategic goals, developing and implementing policies and procedures, and ensuring that the company meets its financial and operational objectives.

Ahmed has a strong background in facilities management and business administration. as he has excellent leadership and communication skills, with the ability to manage multiple projects simultaneously. His job as CEO of a facility management company is challenging and demanding, but he changed it to be very rewarding.

KATIE ADAM

CHIEF CLIENT SUCCESS

Katie Adam is one of our success key persons. She has an invaluable ability to translate a customer's goal into an actionable strategy.

With 20 years of industry experience, she is regarded as an industry leader through innovative approaches and creating a friendly business environment prefaced with respect and transparency. Her lofty experience combined with her attentive personality is a one-two victory punch for our team. Katie excels at articulating concepts and educating customers, so they can make empowered and informed business decisions. Nothing pleases Katie more than an organized process and detailed campaign execution.

AMIRA HAMDY

CHIEF FINANCIAL OFFICER

Amira Hamdy is a highly accomplished results-driven leader with a strong track record of performance in various businesses. Amira joined Facility Hub as Chief Financial Officer (CFO), She has a strong background in accounting and finance. she has excellent analytical and solving skills, as well as the ability to manage large amounts of data.

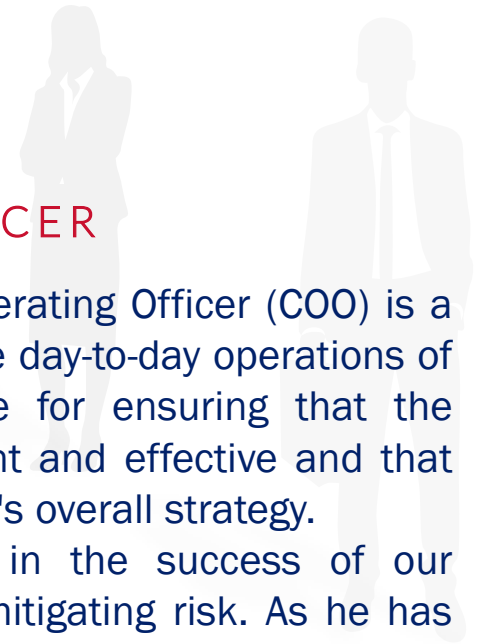
Amira is our team's sound for financial decisions, where she demonstrated her abilities to streamline business operations to drive growth and efficiency to increase bottom-line profitability.

MOHAMED SHAHEEN

CHIEF OPERATION OFFICER

Mohamed Shaheen our Chief Operating Officer (COO) is a senior executive who oversees the day-to-day operations of the company. He is responsible for ensuring that the company's operations are efficient and effective and that they are aligned with the company's overall strategy.

Mohamed plays a critical role in the success of our company and in managing and mitigating risk. As he has strong business acumen with excellent leadership and communication skills to manage the workforce smoothly and efficiently.





BAHAA MOUSA

CHIEF HUMAN RESOURCE OFFICER

Bahaa Mousa is a critical member of the executive team of our company, he attends with us as Chief Human Resources Officer (CHRO). He is responsible for developing and executing the human capital strategy of an organization. Bahaa has a vision for overseeing all aspects of human resources, including talent management, recruitment, training and development, compensation and benefits, and employee relations. He is also responsible for ensuring that the organization's HR practices are compliant with all applicable laws and regulations.



INTEGRATED FACILITIES MANAGEMENT

FACILITY HUB's Integrated Facility Management has excellent experience in the field. Our target is to be respected and trusted as one of the leading service solutions providers to the leading organizations worldwide.





OUR **APPROACH**

When we enter a new partnership, we make a significant effort to understand your specific operational needs and design a facilities management solution to fit your business. As the leading FM provider in the UK, we train and support our employees to make a difference in your business. We offer our customers lower costs for FM services and allow them to focus on their core business.

WHAT WE **DELIVER**

As a facilities management company, we provide professional FM Services delivered through a single or integrated service model across all industry sectors. In addition, we have an ongoing plan to develop partnerships with some of the world's leading firms to support us in managing some of the world's most iconic assets.

SOFT **SERVICES**





SOFT SERVICES in facilities management refer to the non-technical and non-physical tasks that are focused on creating a safe, clean, and comfortable environment for the occupants of a facility. These services generally involve human interaction and are often outsourced to specialized service providers.

A person wearing dark clothing and gloves is operating a high-pressure water sprayer. The sprayer has a bright orange nozzle and a black handle. A white hose is connected to the device. The background is a blurred industrial or construction site. The text "CLEANING SERVICES" is overlaid on the image in a white banner.

CLEANING **SERVICES**

SOFT SERVICES

CLEANING SERVICES

As part of our FM services, we provide highly specialized cleaning services to some of the largest assets including shopping malls, business buildings and residential compounds. Our compliant cleaning services cover a broad spectrum of divisions from industrial cleaning to domestic and from providing hygiene products to pest control.

We strongly believe that tidiness and cleanliness are essential for harmony and peace of mind at your work. Hence, it is essential for companies to create the right environment for efficiency and productivity at the workplace while maintaining a clear brand image. Professional housekeeping services from safe sanitization services enable our clients to keep their environments not only spotlessly clean but also hygienic throughout.

A tall glass skyscraper with a grid-like window pattern. Four workers in orange safety gear and helmets are suspended by ropes, performing facade cleaning. They are carrying white buckets and have cleaning tools. The building's reflection is visible on the glass panels.

FAÇADE **CLEANING**

SOFT SERVICES

FAÇADE CLEANING

Façade cleaning services offer a solution to restore the pristine appearance of your building, enhancing its curb appeal and preserving its value. A clean façade is not just about aesthetics; it's also essential for maintaining the structural integrity of your building. Dirt, grime, and pollutants can accumulate on the exterior, causing damage to materials like stone, glass, and metal.

With extensive experience in façade Cleaning, we know how to remove the toughest stains safely and quickly from building facades with the most cost-effective window cleaning Solutions.

We specialize in window cleaning, high-rise window cleaning and rope access window cleaning projects.

We can implement a professional high-rise window cleaning program for your facility at your schedule and your budget using our Spider Techniques & Specialman & Scissors Lifts, As well as Human Cradle & Cranes.

The image shows two healthcare workers in a clinical setting, likely a hospital corridor or room. They are wearing full personal protective equipment (PPE), including white hooded gowns, face shields, and green gloves. They are using backpack sprayers to disinfect the environment. The worker in the foreground is in profile, facing left, and is actively spraying. The worker in the background is also in profile, facing left, and is also using a sprayer. The background shows a bright, modern clinical environment with large windows and white walls. The text "DISINFECTION AND SANITIZATION SOLUTIONS" is overlaid on the image in a white banner with a blue border. The word "SOLUTIONS" is in red, while the rest of the text is in blue.

DISINFECTION AND SANITIZATION **SOLUTIONS**

SOFT SERVICES

DISINFECTION AND SANITIZATION **SOLUTIONS**

Viruses and bacteria can contaminate the air and stay on the surfaces for days. Ordinary sterilization will only provide temporary and immediate protection, the special sterilization service will make you feel safe about the spread of any viruses. We prepare your workplace to have a healthy and safe environment.

FACILITY HUB's 360-degree sanitization and disinfection solutions deliver safety at every touch point to protect from the spread of viruses and bacteria.

We guarantee to provide state of art service and design the best solutions to prevent the increase in the presence of viruses with high hygienic standards according to the following:

- Work with professional teams with experience.
- Using safe Materials with high disinfection characteristics.



HOSPITALITY AND **CATERING**

SOFT SERVICES

HOSPITALITY AND **CATERING**

Hospitality and catering are two interconnected industries that play a vital role in creating memorable experiences for guests. In the hospitality industry, we focus on providing comfortable and enjoyable services, while catering services provide food and beverages for events and celebrations.

We believe that constantly adapt to new trends and technologies to remain competitive. However, the core principles of hospitality and catering – providing excellent service and creating memorable experiences – remain constant. We provide corporate support solutions and other programs in hospitality and catering. We offer a range of services combined with impeccable delivery in the areas of hotel operations and event management.



SECURITY **SERVICES**

SOFT SERVICES

SECURITY SERVICES

We offer a full solution of risk management services and security consultancy services to fulfil customers' needs according to a defined scope and time, cost, and quality criteria.

We are conscious that, in today's marketplace, security is a vital element of any business; however, its integration must be seamless and without disruption.

We are delivering this by providing a 'fit for purpose' that is the requirement, innovative, and cost-effective from the initial risk assessment to the design of tailor-made physical, technical, and operational security measures from concept to detailed design.

We provide corporate support solutions Access control, CCTV monitoring, security personnel, and emergency response to ensure the safety and protection of the facility and its occupants.

A pest control worker wearing a white protective suit, a respirator mask, and yellow gloves is using a white spray bottle with a black nozzle to apply a substance to a wooden surface. The worker is positioned on the right side of the frame, leaning over the surface. The spray bottle has a black pump handle and a black hose. The wooden surface is light-colored and has a vertical grain. In the background, there is a window with a white frame and a white wall. The floor is made of light-colored wood. The text "PEST CONTROL" is overlaid on the bottom left of the image.

PEST CONTROL

SOFT SERVICES

PEST CONTROL

Our team of pest control experts has the expertise to protect our clients from pest problems. An infestation can be very distressing and disruptive, so we believe in pest prevention and not just cure. Our consultative approach means we can design solutions that fit your business needs rather than using a one-fit-all approach. Our services and products range can offer specialized pest control management solutions across all sectors to protect your premises, products and goods and ensure they meet the appropriate quality, health and safety regulations. This helps reduce the risk of contamination and preserves your reputation and brand image. Our integrated pest management services include monitoring, prevention and curative control according to working practice together with the use of advanced technologies, allowing you to comply with stringent local and international legislation and standards.



LANDSCAPING AND GROUNDS **MAINTENANCE**

SOFT SERVICES

LANDSCAPING AND GROUNDS MAINTENANCE

We provide a comprehensive soft landscaping and grounds maintenance service to compounds, resorts, malls, office buildings, hospitals, the construction industry and commercial clients. We offer maintenance work that covers the planning, designing and caring of landscaping.

Our experienced team can undertake a variety of soft landscape work across a wide range of sites as well as conventional turfing and planting programs. Also maintenance of outdoor spaces, including gardening, lawn care, landscaping, and upkeep of green areas.



WASTE **MANAGEMENT**

WASTE **MANAGEMENT**

Facility Hub provides top-of-the-line Waste management and recycling services to its clients. We provide a fully integrated solution that handles and fits all business sectors from corporates to the sophistication of hospital waste. Our services typically include the following steps:

- Collection
- Transportation
- Disposal

Waste management services have become increasingly sophisticated in recent years. New technologies are being developed to improve the efficiency and effectiveness of waste collection, transportation, and disposal. Waste management services are important to protect public health by preventing the spread of disease and protect the environment by preventing pollution.

A high-angle photograph of a business meeting on a wooden desk. Two people are shaking hands over a clipboard with a document labeled 'Contract'. A laptop with a bar chart on its screen is to the right. In the foreground, a person's hands with dark nail polish are pointing at a tablet displaying a line graph. Various papers and documents are scattered on the desk.

FM CONSULTANCY

SOFT SERVICES

FM

CONSULTANCY

Our team of experienced professionals FM are providing comprehensive facility management solutions to organizations across various industries. With a keen focus on strategic planning, operational efficiency, and cost optimization, they empower businesses to enhance their workplace environments, optimize resource utilization, and achieve their organizational goals. By leveraging their in-depth knowledge of facility management practices, FM Consultants offer a wide range of services, including:

- Facility Management Assessments.
- Space Planning and Design.
- Maintenance Management.
- Sustainability Solutions.
- Cost Management.

HARD **SERVICES**





HARD SERVICES, on the other hand, are technical and physical services that involve the maintenance, repair, and management of the building's infrastructure, systems, and equipment. These services often require specialized technical knowledge and expertise.



MECHANICAL AND ELECTRICAL **MAINTENANCE**

HARD SERVICES

MECHANICAL AND ELECTRICAL MAINTENANCE

We have a complete range of engineering & MEP maintenance services for our clients, with experience covering corporate, commercial, and residential work including maintenance and installation work within units and buildings. We support your business with some services such as maintenance, repair, and management of heating, ventilation, and air conditioning (HVAC) systems, electrical systems, plumbing systems, and other mechanical systems.

We have a proven ability to tailor and customize the provided maintenance service that includes the resident team, providing the needed maintenance activities, and a mobile maintenance team, managing multiple sites at the same time, according to the client's requirements and agreed service level agreement.



TECHNICAL **SERVICES**



FACILITIES MANAGEMENT

HARD SERVICES

TECHNICAL **SERVICES**

We provide a wide range of facilities management technical services delivered by an experienced team of qualified professionals. Our compliant facility management services include architectural engineering maintenance and energy management. Our services include the regular upkeep, repair, and replacement of building components to maintain their integrity and prevent deterioration. This includes tasks such as inspecting structural elements, repairing cracks or leaks, and addressing any damage caused by weather or wear and tear. Effective architecture maintenance extends the lifespan of buildings, reduces the risk of costly repairs, and enhances occupant safety.

Energy management, on the other hand, focuses on optimizing energy consumption and reducing the environmental impact of buildings. It involves implementing strategies to minimize energy use for heating, cooling, lighting, and other building systems.

A construction worker is shown from the back, wearing a dark blue long-sleeved shirt, a bright orange high-visibility safety vest with reflective silver stripes, and a green safety harness. A blue metal D-ring is attached to the harness. The worker is standing on a steel framework. In the background, another worker in a yellow hard hat and orange vest is visible, working on a similar structure. The scene is set outdoors with a bright, hazy sky.

HEALTH AND **SAFETY**

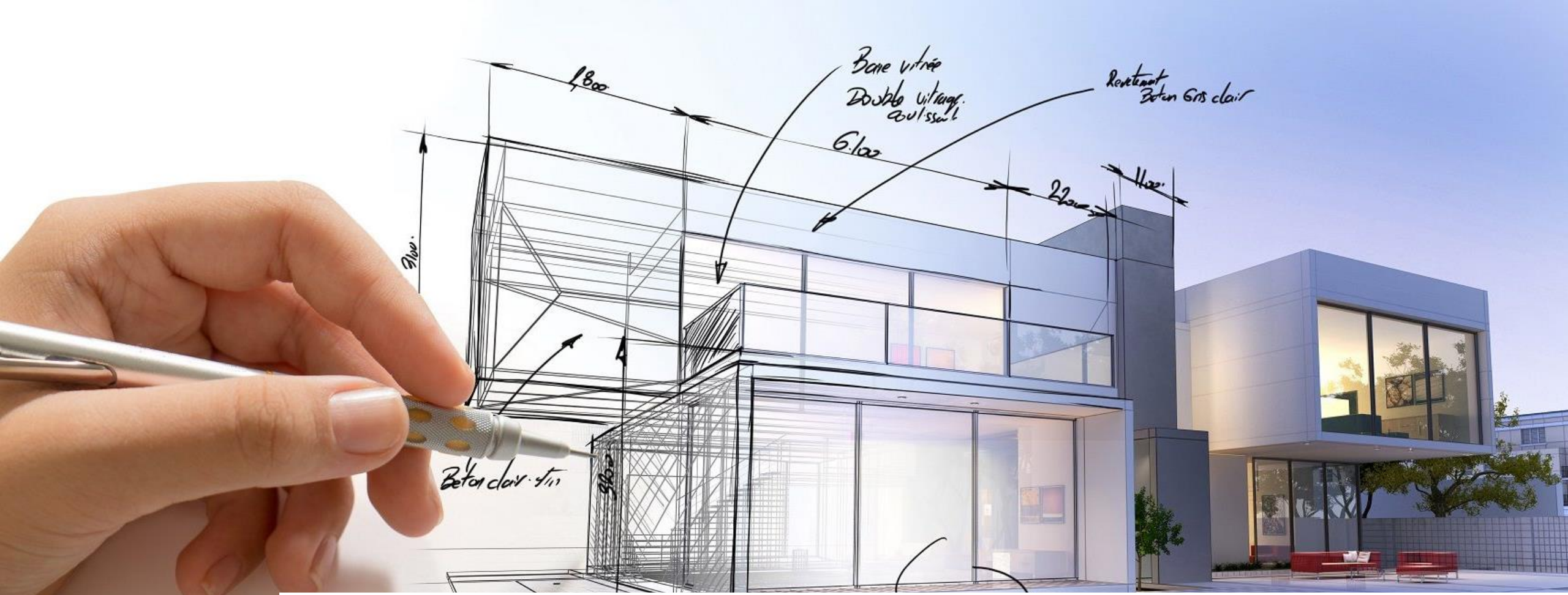
HARD SERVICES

HEALTH AND **SAFETY**

We have the best solutions available to ensure that your premises meet the specified requirements for fire safety and all your safety needs. We provide safety assessments and consulting on all types of buildings and facilities. Our services include emergency preparedness, building protection, and general building safety, identification of emergency response teams, onsite support and evacuation planning.

We offer a complete solution for Health and safety starting from preparing safety plans and safety policy documentation for special projects to comply with client requirements. and provide the projects with all necessary tools and equipment.

We prepare risk assessments for any special project and provide our clients with H&S site inspection reports with required corrective actions. With our recommendation or demanded necessary action or procedural changes to correct issues which are not in compliance with regulations.



FIT OUT

Terrasse. Carrelage Gris satin.
30x30 Gris. pète.

Banc vitrée triple
Double vitrage.
tech. ext.



FACILITIES MANAGEMENT

HARD SERVICES

FIT OUT

Facility Hub specializes in the fit-out of high-end commercial and residential space from retail, corporate offices, financial institutions, and airports through to apartment towers and stand-alone villas. The team is focused on the successful delivery of fit-out projects on time, on budget and to the highest standards of quality, as well as ongoing maintenance and support.

We provide a complete solution for the full-scope fit-out interior solution including fit-out furnishing, for the retail, commercial, and office sectors that illustrate our skills in combining aesthetic and operational requirements to create the harmonious and complete results our clients expect.

Our people offer a wide variety of services encompassing, design, business planning, project management, and commercial services.

Other **SERVICES**





OTHER SERVICES, we provide a variety of extra services to our clients where we can provide a fully integrated services portfolio. Our integrated services enable clients to focus on their core business as we support their objectives by combining the full range of support services under the umbrella of a single contract.



SUPPLY CHAIN



SUPPLY **CHAIN**

We at Facility Hub know that the overall business need is ultimately the driving force behind selecting which will be best for the business. Our Supply Chain team studies all things that are determinants of the suitable model of supply chain models, and which one will deliver the support to the overall organization's goals.

We planning the inventory processes to ensure the supply of all your needs in time as we have a big network of sourcing materials needed to operate all organizations. Our Service includes packaging, transporting and delivering the product to any place with the perfect customer service support.

We can Support your business with:

Office Supplies, Pantry and Buffet Support, Tools & Equipment and any type of Furniture.



CUSTOMER SERVICES

OTHER SERVICES

CUSTOMER SERVICES

We offer an integrated system of customer service that includes the following:

A hotline to receive all customer complaints and respond immediately to these complaints.

Designing a mobile application for the project to communicate with customers. Also, Creating and managing websites.

Follow up on customer deliveries of units in residential complexes, business buildings, and commercial and medical buildings.

Follow up on the finishing operations carried out by customers and ensure that they are carried out within the project's operating regulations.

Collection operations and all periodic payment services for the general services of the project.

Measuring customer satisfaction and creating a database that allows management to follow up on any complaint, identify its causes and resolve it as soon as possible.

A blue-tinted background image showing several call center agents wearing headsets and smiling. The image is partially obscured by text and design elements.

FACILITIES MANAGMENT

24 / 7

OUR CALL CENTER

Facility Hub professional call center provides 24 hours a day, 365 days a year support. Our dedicated and trained frontline operators remain ready to dispatch services that are required immediately, easily tailored to client needs with cost effective solutions.




FACILITY HUB UNITED KINGDOME

 24-26, Arcadia Avenue, Dephna House #105, London, Greater London, N3 2JU, UNITED KINGDOM

 +44 747 6196 056

FACILITY HUB EGYPT

 Building No. 47 North 90th St. – 5th Settlement – New Cairo - EGYPT

 +20 128 8861 788



www.facility-hub.uk



info@facility-hub.uk